





# 電磁換向閥

# Solenoid Operated Directional Valves

## 閥軸種類 / SPOOL TYPES

### 三位置 SPRING CENTERED 3 POSITIONS

WE43-G※※-C2 	WE43-G※※-C3 	WE43-G※※-C4 	WE43-G※※-C40 
WE43-G※※-C5 	WE43-G※※-C60 	WE43-G※※-C7 	WE43-G※※-C8 
WE43-G※※-C9 	WE43-G※※-C10 	WE43-G※※-C11 	WE43-G※※-C12 

### 二位置 NO SPRING 2 POSITIONS

WE42-G※※-D2 	WE42-G※※-D3 	WE42-G※※-D7 	WE42-G※※-D8 
-----------------	-----------------	-----------------	-----------------

### 二位置 NO SPRING 2 POSITIONS(※)

WE42-G※※-B2 	WE42-G※※-B3 	WE42-G※※-B8 
-----------------	-----------------	-----------------

(※) (可變換逆組立)  
CONVERTIBLE REVERSE ASSEMBLAGE

### 二位置 B※A B※B D※A 2 POSITIONS

番號 TYPE	油壓符號 GRAPHIC SYMBOLS		番號 TYPE	油壓符號 GRAPHIC SYMBOLS		番號 TYPE	油壓符號圖 GRAPHIC SYMBOLS
	標準組立 SIANDARD ASSEMBLAGE	逆組立 REVERSE ASSEMBLAGE		標準組立 SIANDARD ASSEMBLAGE	逆組立 REVERSE ASSEMBLAGE		
B2A			B2B			D2A	
B3A			B3B			D3A	
B4A			B4B			D4A	
B40A			B40B			D40A	
B5A			B5B			D5A	
B60A			B60B			D7A	
B7A			B7B			D9A	
B8A			B8B			D10A	
B9A			B9B			D11A	
B10A			B10B			D12A	
B11A			B11B				
B12A			B12B				



# 電磁換向閥

# Solenoid Operated Directional Valves

## 規格說明 / SPECIFICATIONS :

最高工作壓力 <b>Maximum operating pressure</b>	315 kgf/cm <sup>2</sup> (4500 PSI)
最大流量 <b>Rated flow capacity</b>	52 LPM (16.8GPM)
最高容許背壓 <b>Maximum tank line back pressure</b>	140 kgf/cm <sup>2</sup> (2000 PSI)
最高操作頻率 <b>Maximum frequencies of operation</b>	300 CPM(AC.DC)
過濾精度 <b>Filteration recommended</b>	25 Micron or less
液壓油 <b>Hydranlic fluids</b>	礦物油操作溫度5-60°C <b>Mineral oil, recommendation temperature 5-60°C</b> 粘性係數：90以上 <b>Viscosity index : 90 or more</b> 工作粘數指數10-400cst <b>Operating Viscosity 10-400 cSt</b>

## 說明 / SOLENOID RATINGS :

線圈型式 <b>COIL TYPE</b>	電壓 <b>VOLTAGE(V)</b>			額定電壓耗電率 <b>CURRENT &amp; POWER AT RATED VOLTAGE</b>			重量 <b>WEIGHT kgs</b>		
	供應電壓 <b>SOURCE RATED</b>	赫茲 <b>HZ</b>	允許壓差範圍 <b>RANGE</b>	沖擊電流 <b>IN-RUSH CURRENT(A)</b>	保持電流 <b>HOLDING CURRENT(A)</b>	消耗功率 <b>WATTAGE</b>			
A110	AC100V	50	90-110	1.7	0.33	X	單線圈：1.6 kgs <b>Sing solenoid : 1.6</b>  雙線圈：2.0 kgs <b>Double solenoid : 2.0</b>		
	AC110V	60	99-121	1.5	0.40				
A120	AC110V	50	99-121	1.35	0.39				
	AC120V	60	108-132	1.25	0.28				
A220	AC200V	50	180-220	0.85	0.17				
	AC220V	60	198-242	0.80	0.20				
A240	AC220V	50	198-242	0.68	0.20				
	AC240V	60	216-260	0.60	0.13				
D12	DC12V		10.8-13.2	2.2	2.2			26	單線圈：1.7 kgs <b>Sing solenoid : 1.7</b> 雙線圈：2.1 kgs <b>Double solenoid : 2.1</b>
D24	DC24V		21.6-26.4	1.1	1.1				

### 技術資料 / TECHNICAL DATA:

- 符合ISO標準規格，安裝絕對可互換性。  
**In conformity with the ISO standard, the installation is absolutely interchangeable.**
- 線圈承受電壓範圍在±10% 內  
**Solenoid can be used within-10% to +10% of the rated voltage of the coil.**
- 可承受電壓1500 v/sec  
**Withstand voltage 1500 v/sec.**
- 絕緣電阻：H型  
**Insulation resistance: H type.**
- 指示訊號後0.1秒開始動作  
**A momentary signal of approx. 0.1 second is required for shifting action.**

### 附件 / ACCESSORIES:

- 內六角沉頭螺絲：M5x45L，螺絲扭力：50-70 kgf/CM  
**Mounting bolt kits are supplied with valve socket head cap screws  
M5x45L 4 pieces for tightening torque 50-70 kgf/cm.**

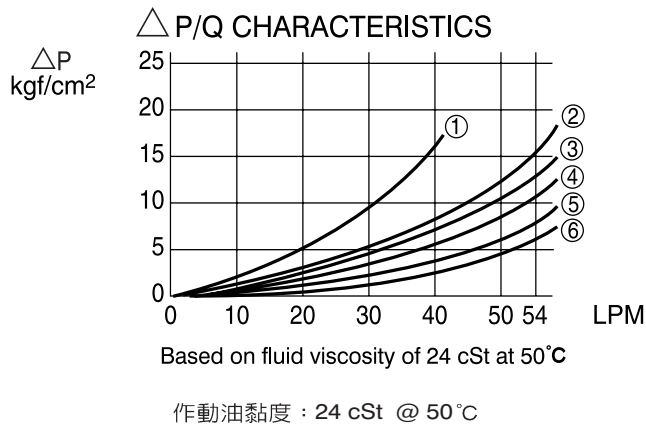


# 電磁換向閥

# Solenoid Operated Directional Valves

## G02 SERIES

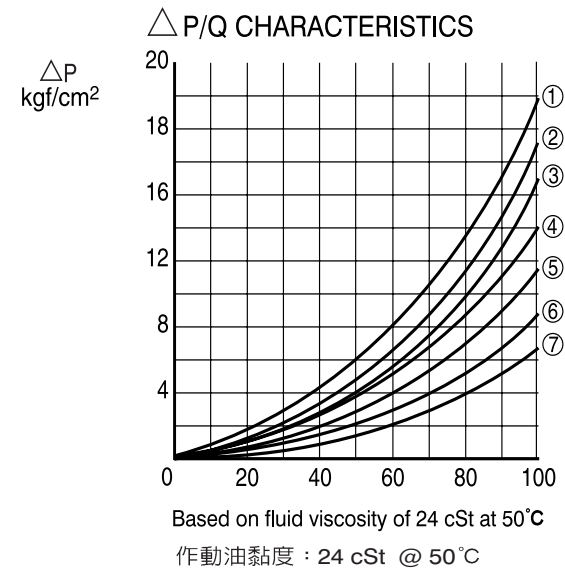
壓力 / 流量 特性表



spool type	flow direction				
	P→A	B→T	P→B	A→T	P→T
C2	⑤	⑤	⑤	⑤	—
C3	⑥	⑥	⑥	⑥	④
C4	⑤	⑥	⑤	⑥	—
C40	⑤	⑤	⑤	⑤	—
C5	①	①	①	①	④
C60	①	①	①	①	④
C7	⑤	⑤	⑤	⑤	—
C8	⑤	—	⑤	—	—
C9	⑥	⑤	⑥	⑤	—
C10	⑤	⑥	⑤	⑤	—
C11	⑥	⑤	⑤	⑤	—
C12	⑤	⑤	⑤	⑥	—
C2	⑤	②	⑤	②	—
D3	⑤	③	⑤	③	—
D8	⑤	—	⑤	—	—
B2	②	②	⑤	⑤	—
B3	③	③	⑤	⑥	—
B8	⑤	—	⑤	—	—

## G03 SERIES

壓力 / 流量 特性表



spool type	flow direction				
	P→A	B→T	P→B	A→T	P→T
C2	④	⑤	④	⑤	—
C3	⑥	⑤	⑥	⑥	⑥
C4	④	⑦	④	⑦	—
C40	④	⑤	④	⑤	—
C5	⑥	⑤	④	⑥	②
C60	③	⑤	⑤	⑤	①
C7	④	⑤	④	⑤	—
C8	③	—	③	—	—
C9	⑥	⑤	⑥	⑤	—
C10	④	⑦	④	⑤	—
C11	⑥	⑤	④	⑤	—
C12	④	⑤	④	⑦	—
C2	③	③	④	⑤	—
D3	③	③	⑤	⑤	—
D8	④	—	④	—	—
B2	②	②	④	⑤	—
B3	②	②	⑤	⑥	—
B8	④	—	③	—	—



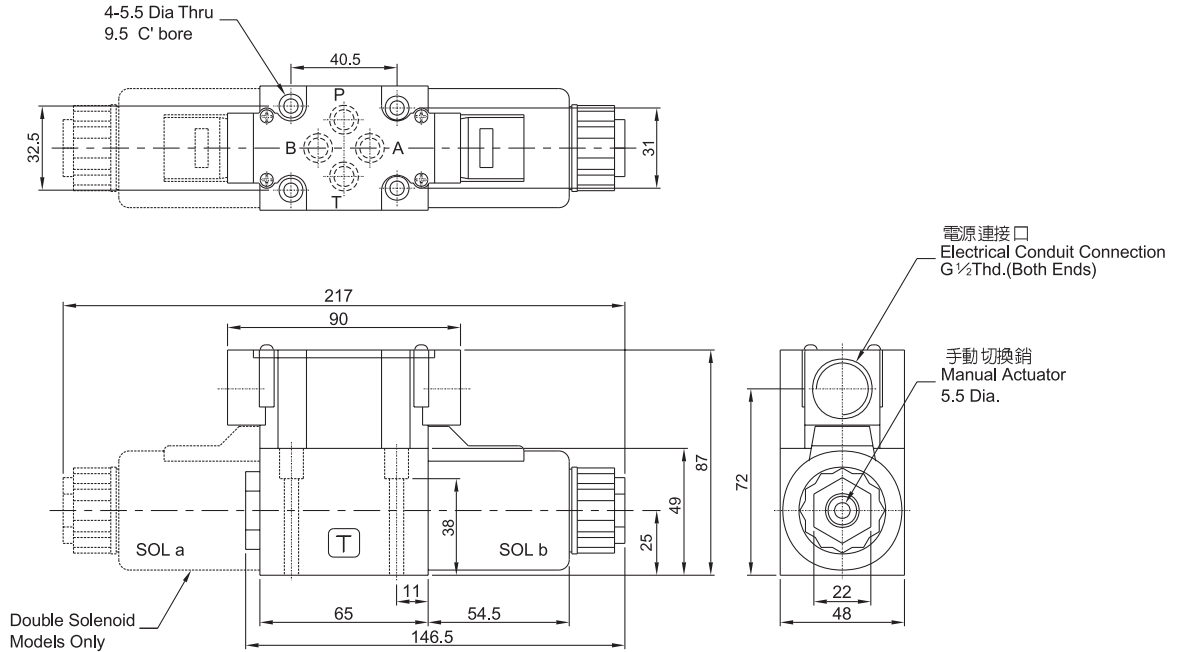
# 電磁換向閥

# Solenoid Operated Directional Valves

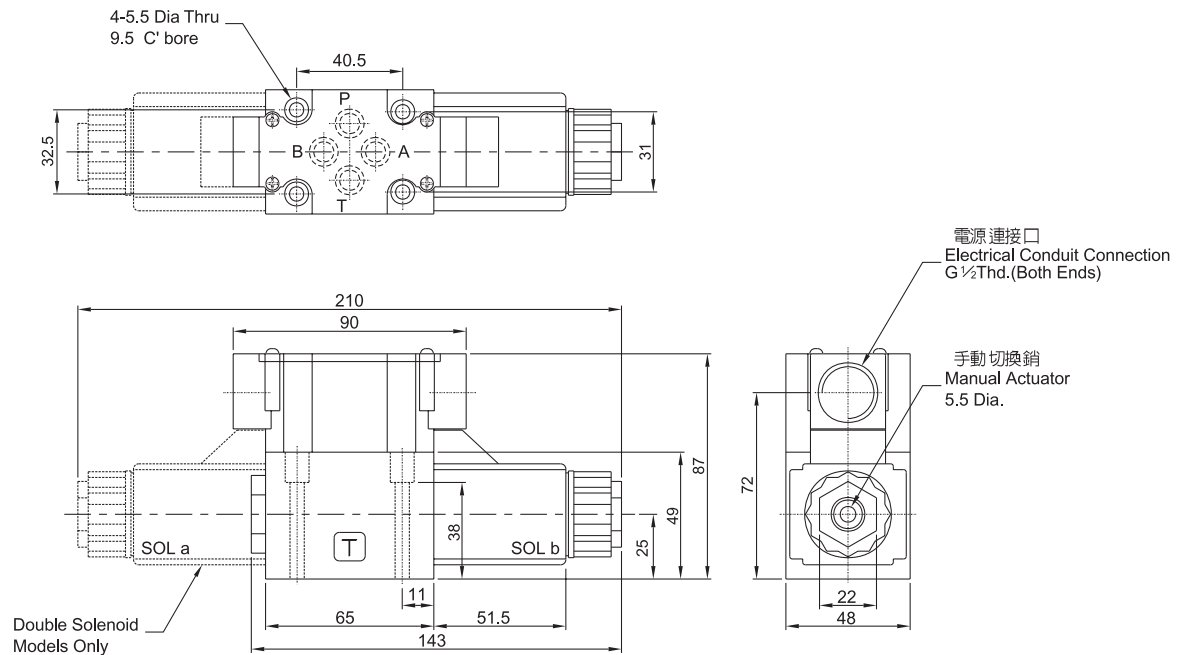
## 安裝尺寸 / INSTALLATION DIMENSIONS :

單位 UNIT : mm

### WE43-G02-※-AC220/110/120/220/240



### WE43-G02-※-DC12/24





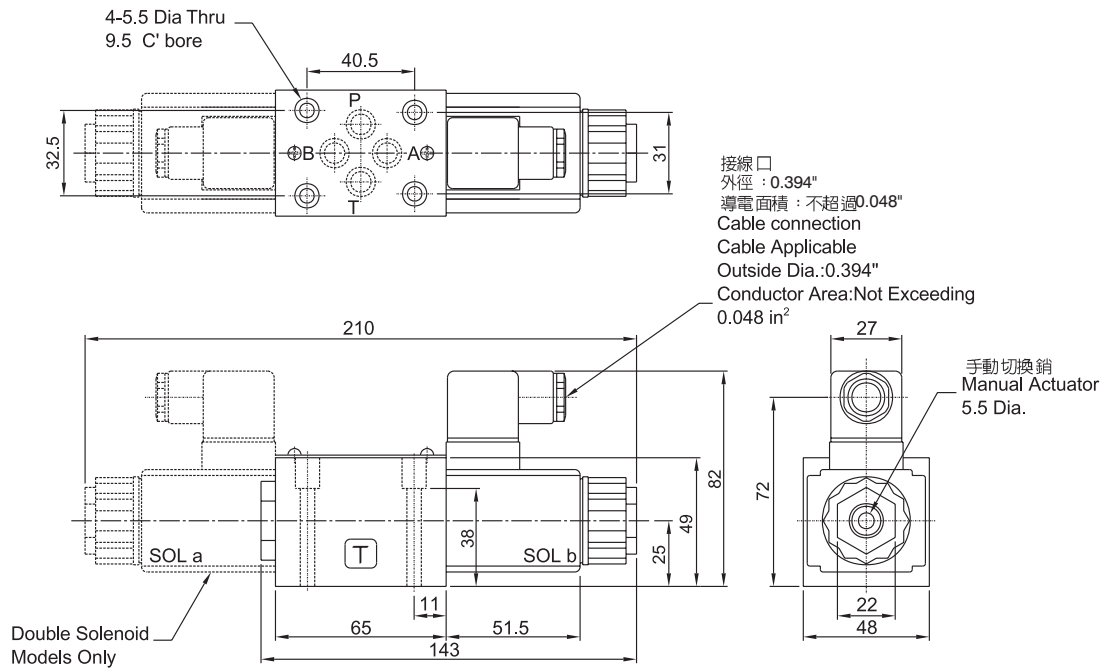
# 電磁換向閥

# Solenoid Operated Directional Valves

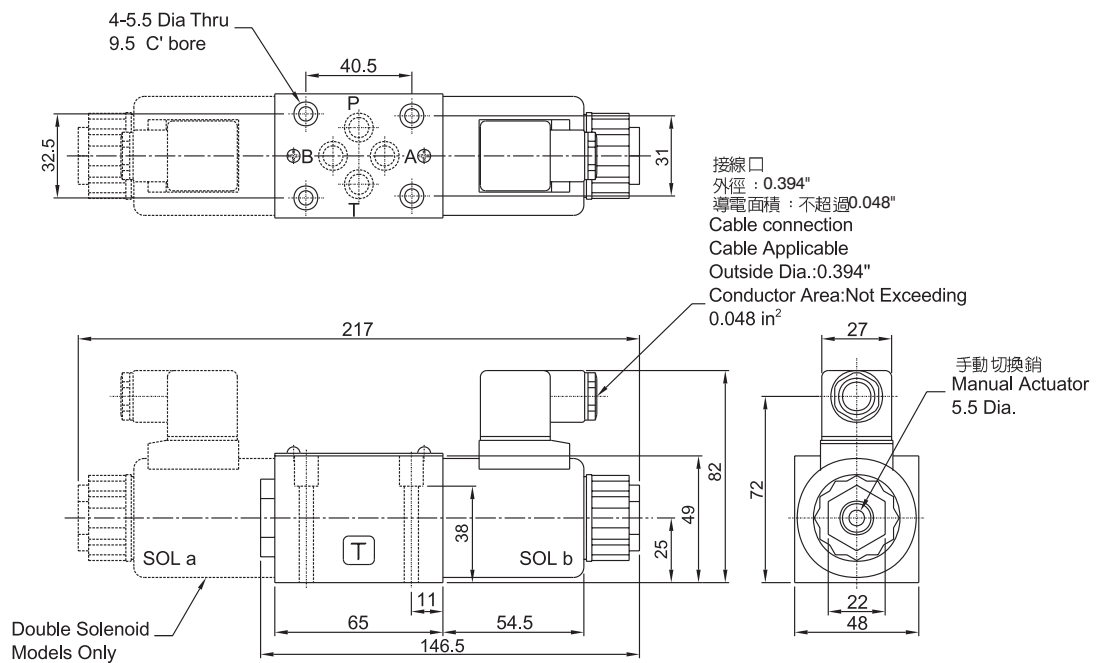
## 安裝尺寸 / INSTALLATION DIMENSIONS :

單位 UNIT : mm

### WE4※G02-※-A110N/220N/120N/240N



### WE4※-G02-※-DC12N/24N







# 電磁換向閥

# Solenoid Operated Directional Valves

## 規格說明 / SPECIFICATIONS :

最高工作壓力 Maximum operating pressure	315 kgf/cm <sup>2</sup>
最大流量 Rated flow capacity	100 LPM
最高容許背壓 Maximum tank line back pressure	100 kgf/cm <sup>2</sup>
最高操作頻率 Maximum frequencies of operation	240 C. P. M. (AC/DC)
過濾精度 Filtration recommended	25 Micron or less
液壓油 Hydranlic fluids	礦物油操作溫度5-60°C Mineral oil, recommendation temperature 5-60°C 粘性係數：90以上 Viscosity index: 90 or more 工作粘數指數10-400cSt Operating Viscosity 10-400 cSt

## 說明 / SOLENOID RATINGS :

線圈型式 COIL TYPE	電壓 VOLTAGE(V)			額定電壓耗電率 CURRENT & POWER AT RATED VOLTAGE			重量 WEIGHT kgs	
	供應電壓 SOURCE RATED	赫茲 HZ	允許壓差範圍 RANGE	沖擊電流 IN-RUSH CURRENT(A)	保持電流 HOLDING CURRENT(A)	消耗功率 WATTAGE		
A110	AC100V	50	90-110	4.80	0.86	31	單線圈：3.3 kgs Sing solenoid : 3.3  雙線圈：3.9 kgs Double solenoid : 3.9	
	AC110V	60	99-125	4.20	0.75	32		
A120	AC110V	50	99-121	4.30	0.78	30		
	AC120V	60	108-138	4.00	0.72	32		
A220	AC200V	50	180-220	2.32	0.42	30		
	AC220V	60	198-251	2.05	0.36	32		
A240	AC220V	50	198-242	2.05	0.37	29		
	AC240V	60	216-270	1.90	0.33	32		
D12	DC12V		10.8-13.2	2.58	2.58	32		單線圈：3.9 kgs Sing solenoid : 3.9 雙線圈：5.2 kgs Double solenoid : 5.2
D24	DC24V		21.6-26.4	1.33	1.33			

### 技術資料 / TECHNICAL DATA:

- 線圈承受電壓範圍在±10% 內  
Solenoid can be used within-10% to +10% of the rated voltage of the coil.
- 可承受電壓1500 v/sec  
Withstand voltage 1500 v/sec.
- 絕緣電阻在100M Ω 以上  
Insulation resistance over 100M Ω

### 附件 / ACCESSORIES:

- 內六角沉頭螺絲：M6x35L，螺絲扭力：120-150 kgf/CM  
Mounting bolt kits are supplied with valve socket head cap screws  
M6x35L 4 pieces for tightening torque 120-150 kgf/cm.

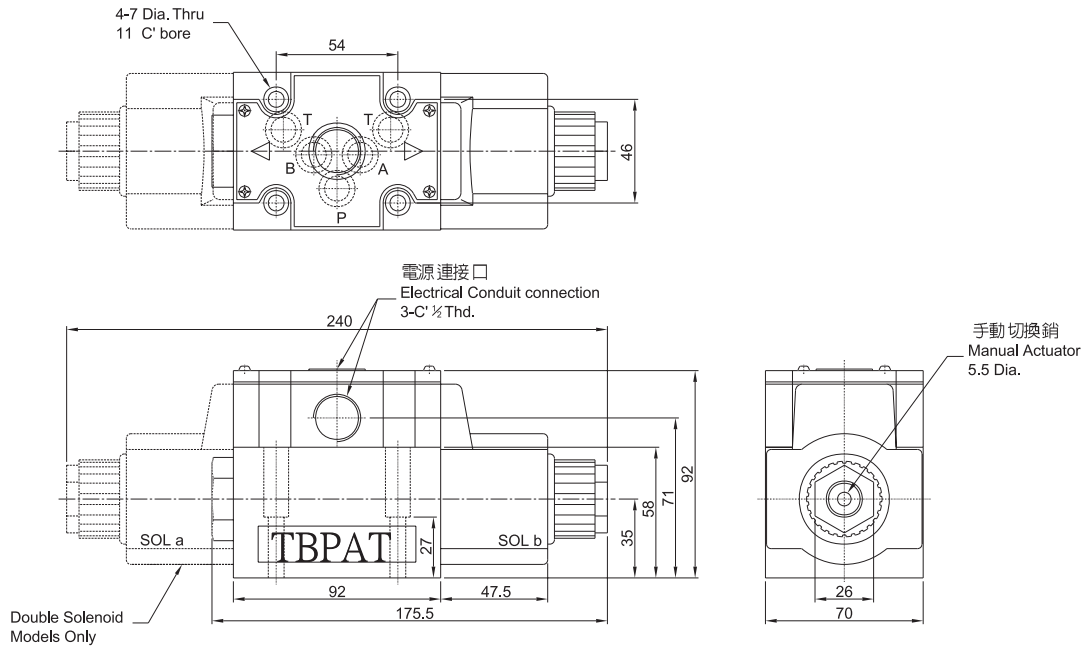


# 電磁換向閥

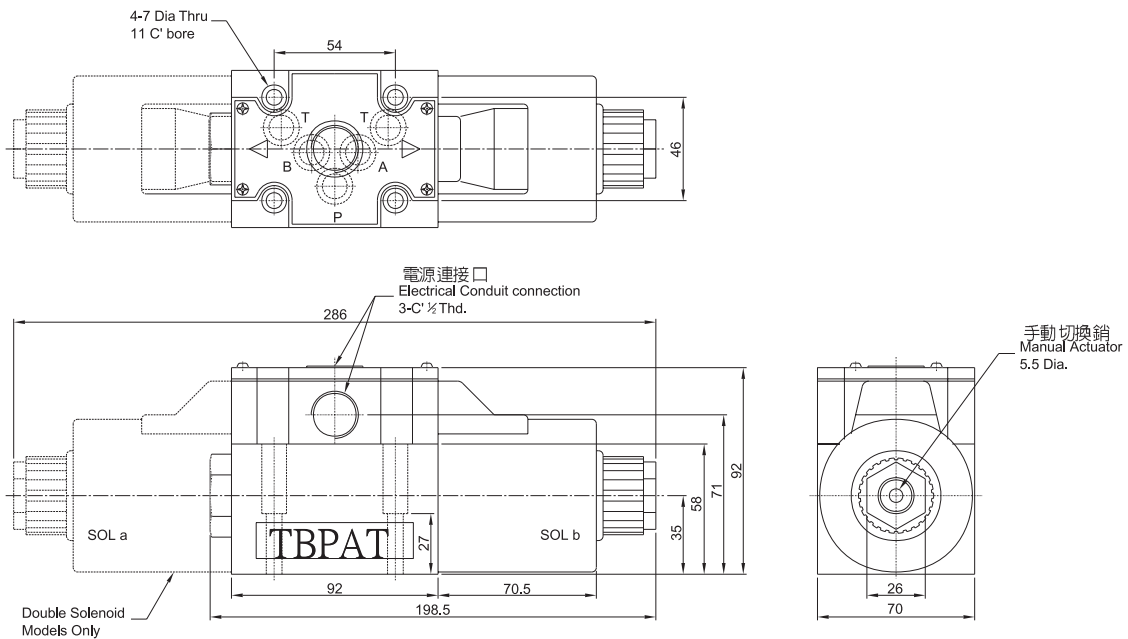
# Solenoid Operated Directional Valves

## 安裝尺寸 / INSTALLATION DIMENSIONS :

### WE4※-G03-AC110/220/120/240



### WE4※-G03-DC12/24



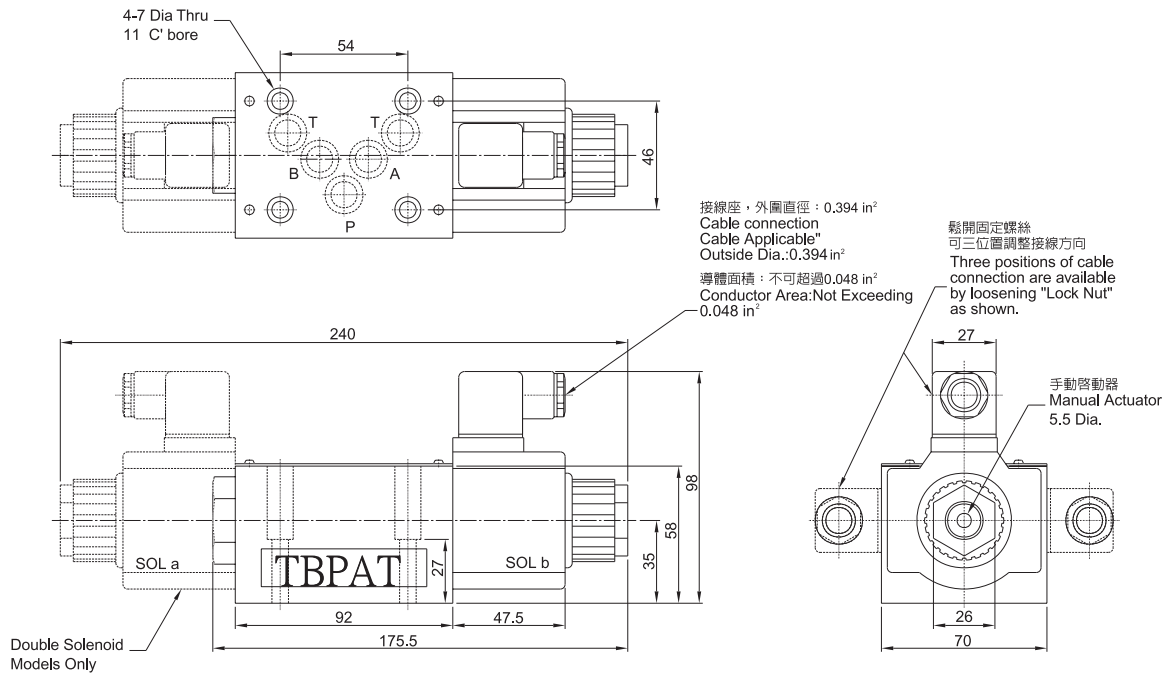


# 電磁換向閥

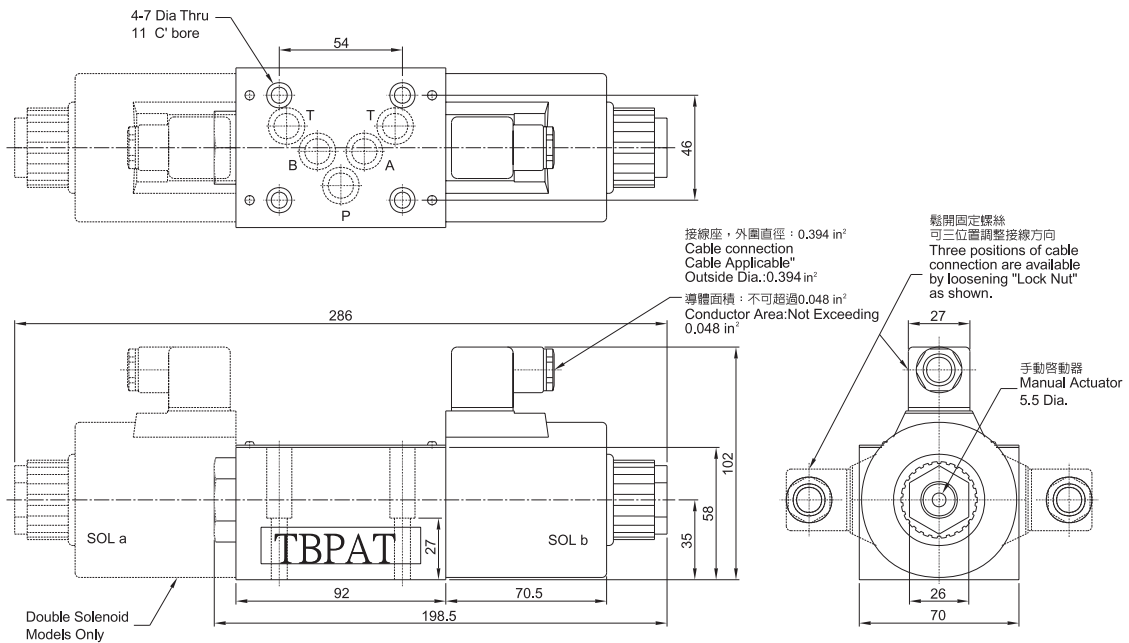
# Solenoid Operated Directional Valves

## 安裝尺寸 / INSTALLATION DIMENSIONS :

### WE4※-G03-AC110N/220N/120N/240N



### WE4※-G03-DC12N/24N



# 電液換向閥

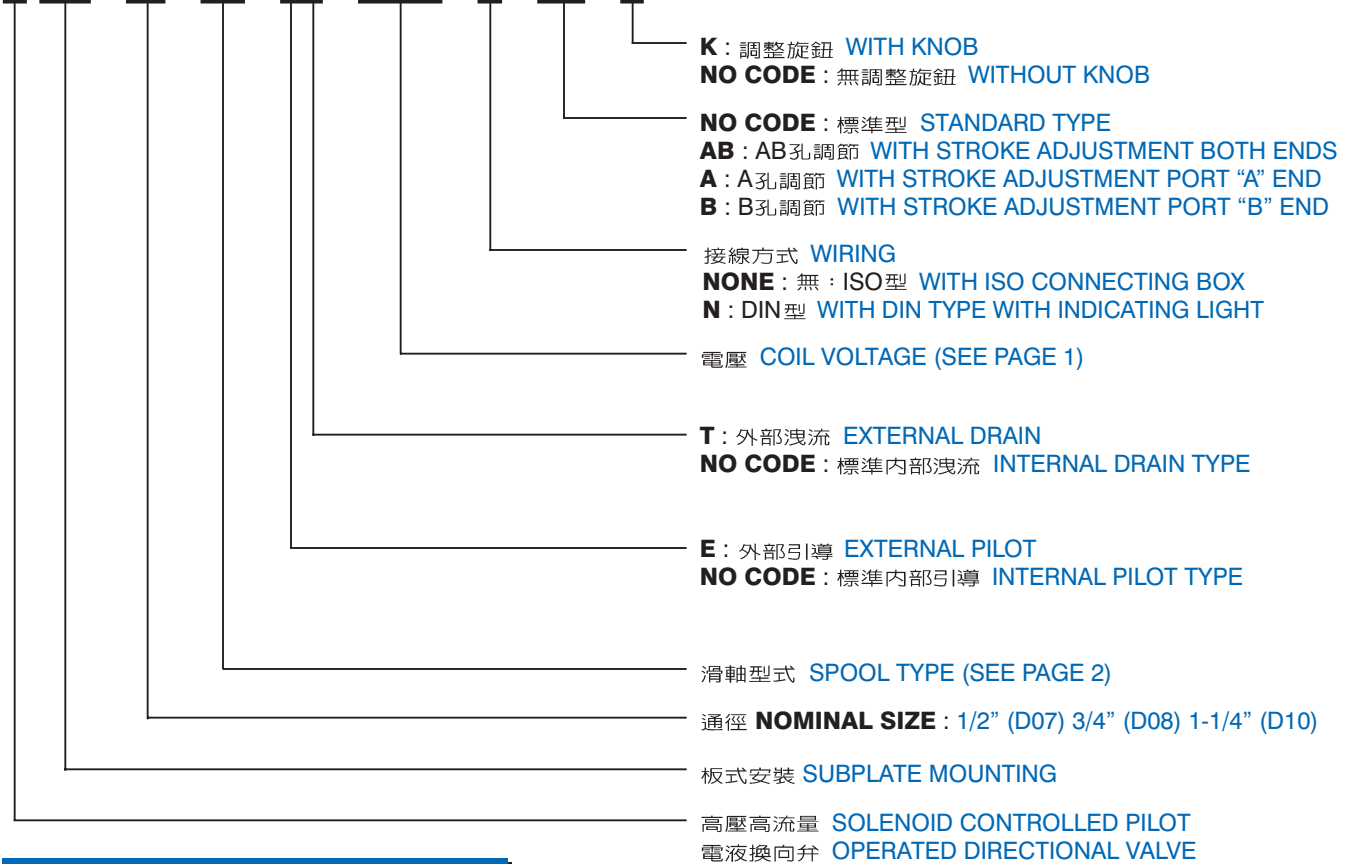


# Solenoid Controlled Pilot Operated Directional Valves



## 型號說明 / HOW TO ORDER :

**D HG-04-C2-ET-A220-N-AB-K**



## 規格說明 / SPECIFICATIONS :

型式 MODEL	最大流量 MAX. FLOW l/min	最高壓力 MAX. OPERATING kgf/cm <sup>2</sup>	最高引導壓 MAX. PILOT kgf/cm <sup>2</sup>	最低引導壓 MIN. PILOT kgf/cm <sup>2</sup>	最大容許背壓 MAX. T-LINE BACK PRESSURE kgf/cm <sup>2</sup>		最高切換速率 MAX. CHANGE OVER FREQUENCY Cycles/min			重量 WEIGHT kg
					外部洩流 EXT. DRAIN	內部洩流 INT. DRAIN	AC	DC	R	
DHG-04-C*-*	300	315	250	8	210	140	120	120	120	8.8
DHG-06-C*-*	500	315	250	8	210	140	120	120	120	12.7
DHG-10-C*-*	1100	315	250	8	210	140	120	120	120	45.3



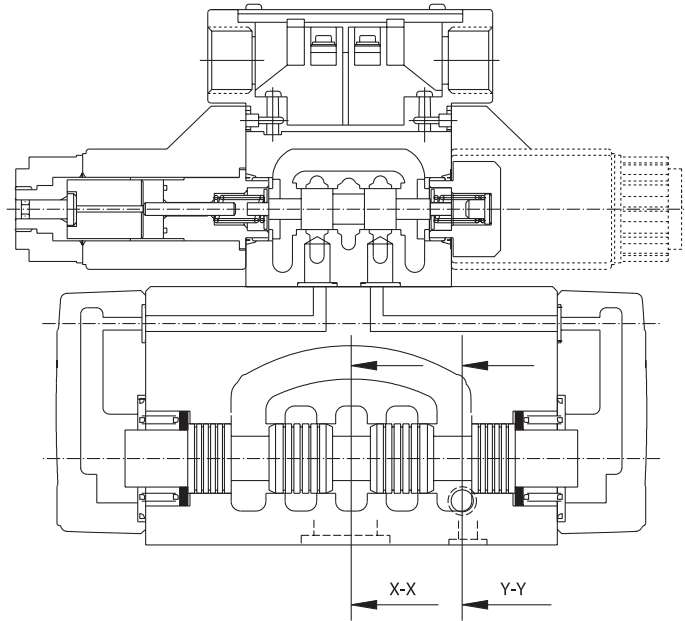
# 電液換向閥

# Solenoid Controlled Pilot Operated Directional Valves

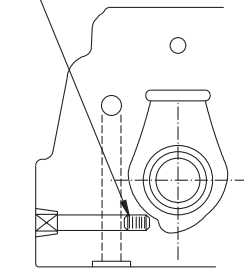
## 安裝尺寸 / INSTALLATION DIMENSIONS :

單位 UNIT : mm

### ■ DHG-04

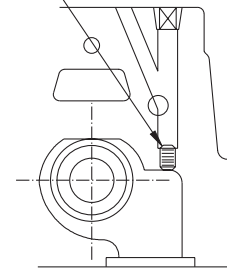


無螺塞是內部洩流  
Without Plug  
When valve is  
Internally Drained.



剖面  
Section X-X

無螺塞是內部引導  
Without Plug  
When valve is  
Internally Piloted.



剖面  
Section Y-Y

## 附件 / ATTACHMENT :

型式 MODEL	內六角沉頭螺絲 SOC HOL CAP SCREW
DHG-04	M6 × 40L ..... 2pcs
	M10 × 40L ..... 4pcs
DHG-06	M12 × 45L ..... 6pcs
DHG-10	M20 × 75L ..... 6pcs

# 電液換向閥



# Solenoid Controlled Pilot Operated Directional Valves

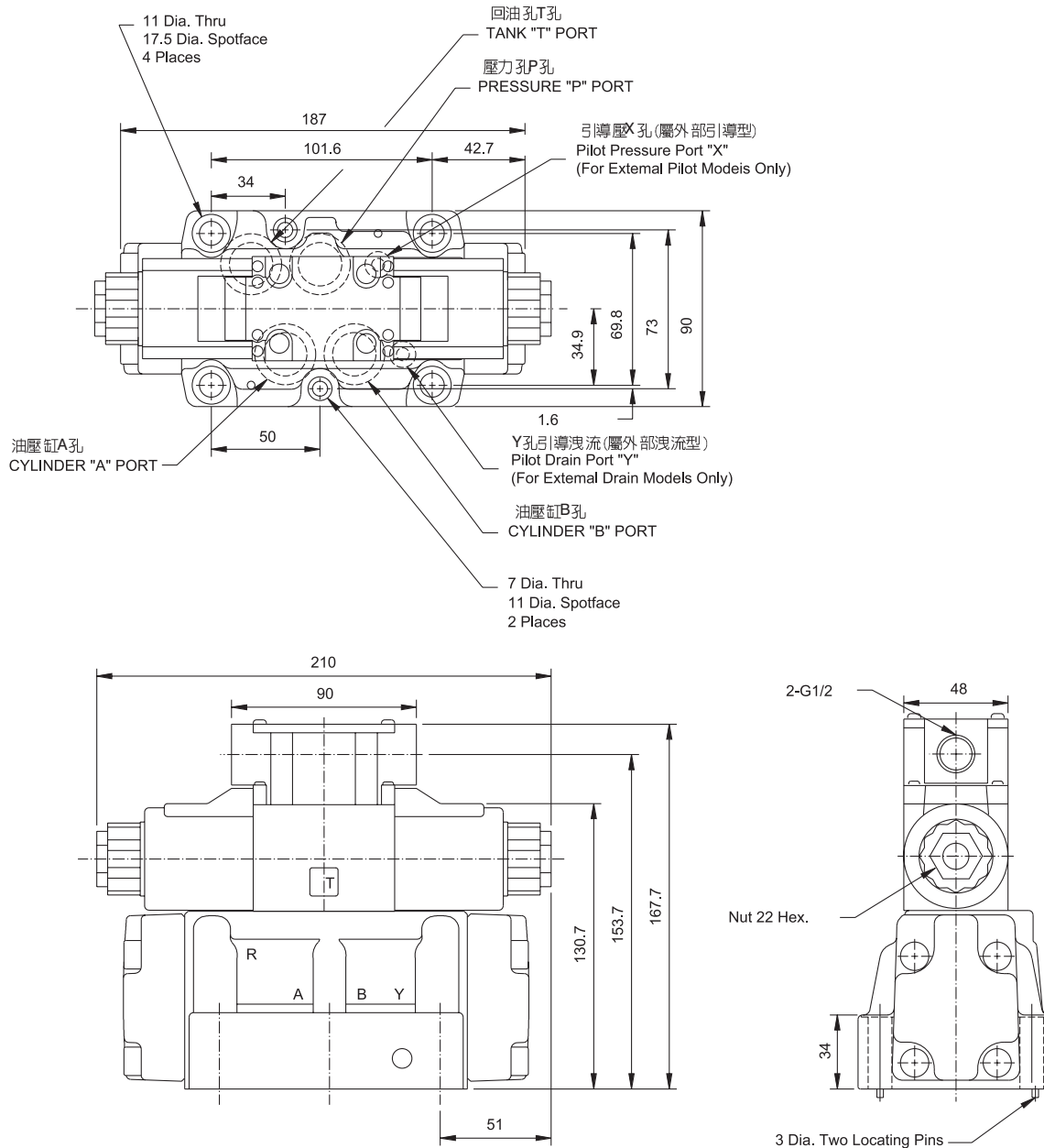
## 安裝尺寸 / INSTALLATION DIMENSIONS :

單位 UNIT : mm

■ DHG-04-\*\*\*-\*\*\*-\*\*\*-10

安裝面 : ISO 4401-AD-07-4A

Mounting Surface : ISO 4401-AD-07-4A





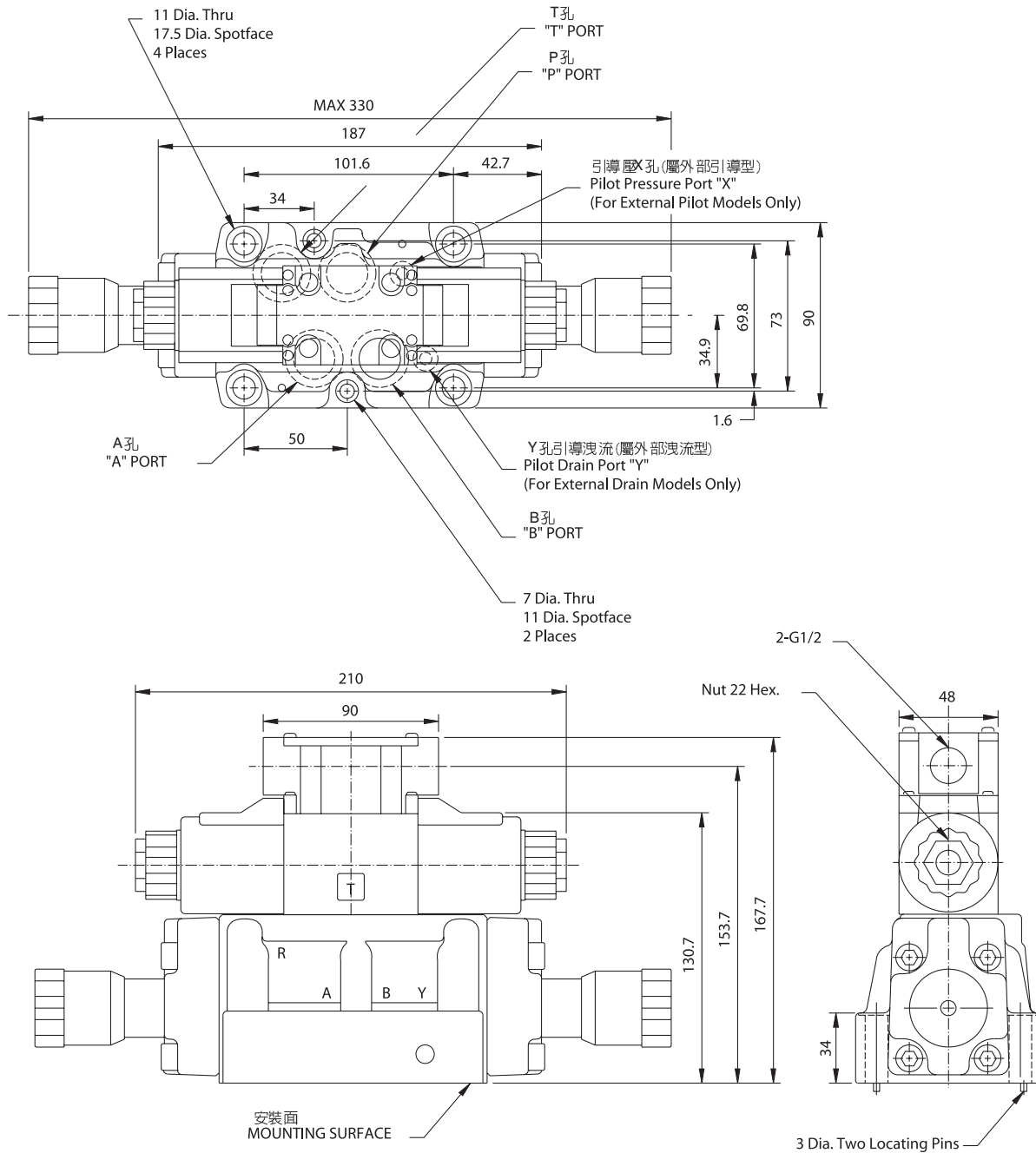
# 電液換向閥

# Solenoid Controlled Pilot Operated Directional Valves

## 安裝尺寸 / INSTALLATION DIMENSIONS :

單位 UNIT : mm

### ■ DHG-04-\*\*\*-\*\*-\*\*\*-10-AB-K



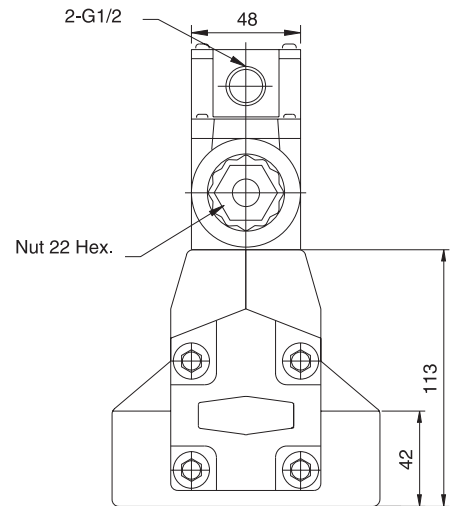
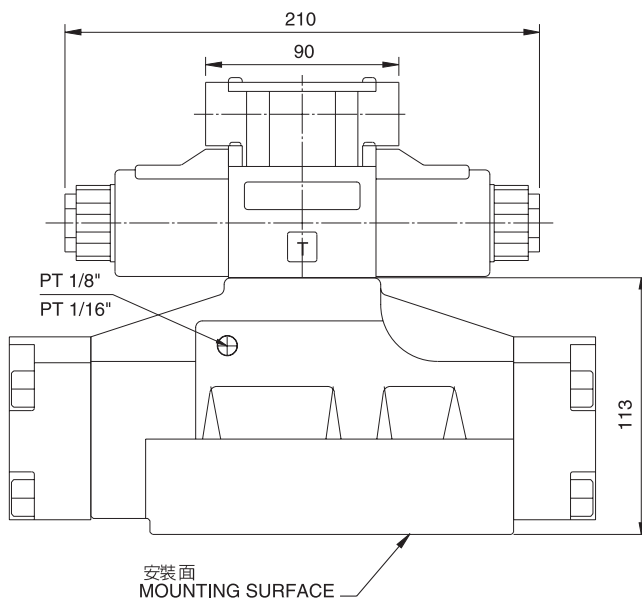
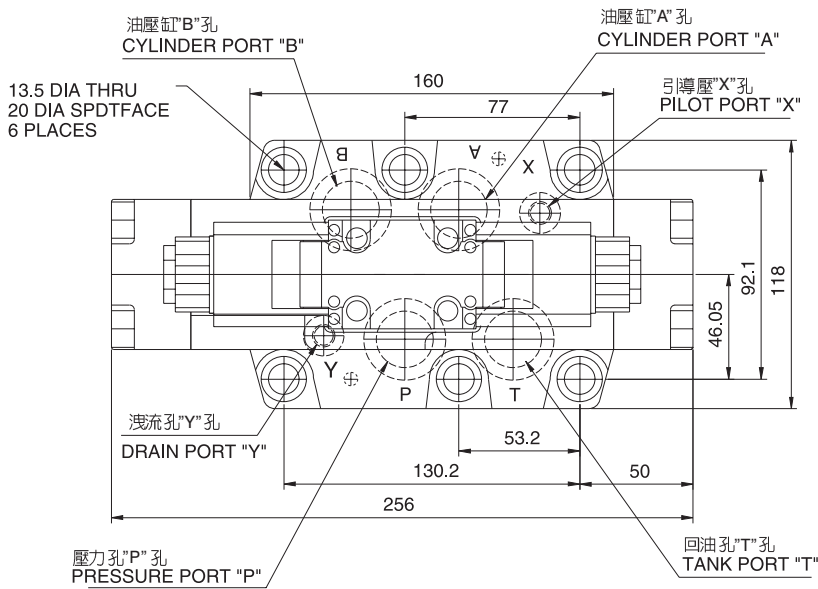
# 電液換向閥



# Solenoid Controlled Pilot Operated Directional Valves

單位 UNIT : mm

## ■ DHG-06





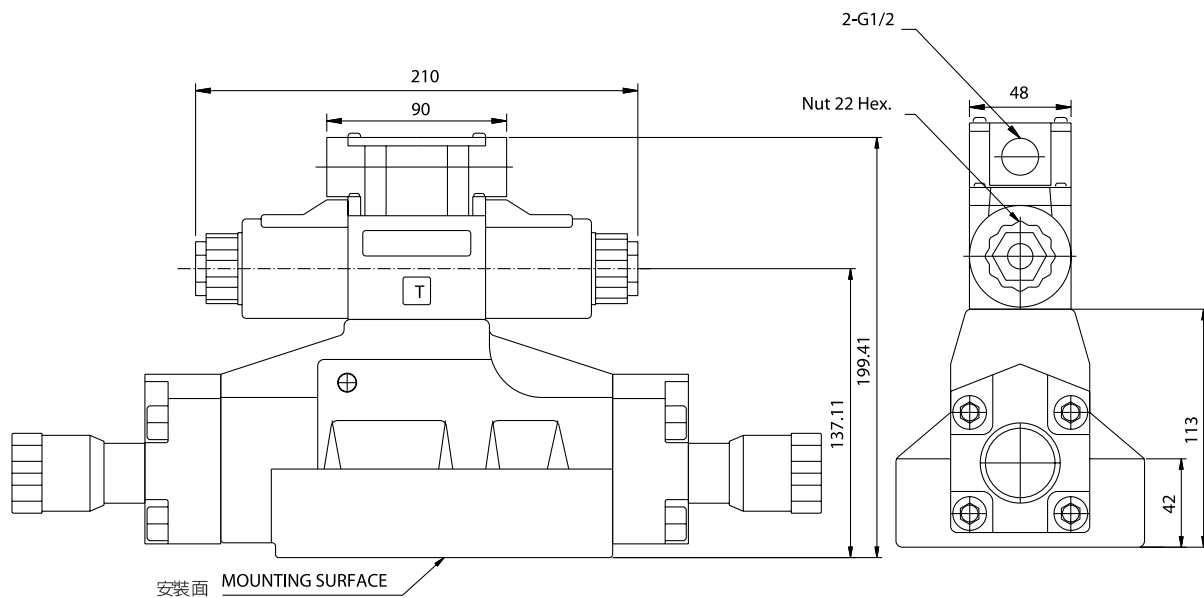
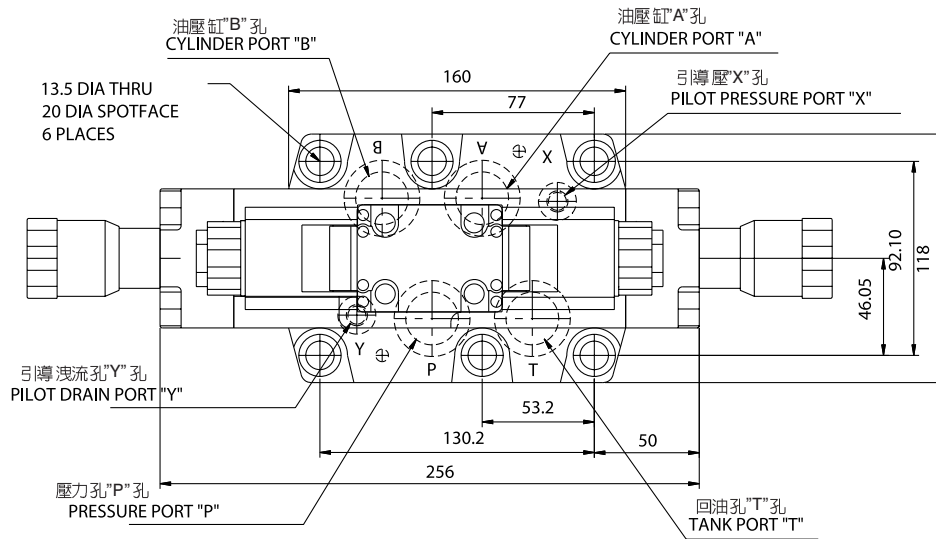
# 電液換向閥

# Solenoid Controlled Pilot Operated Directional Valves

## 安裝尺寸 / INSTALLATION DIMENSIONS :

單位 UNIT : mm

### ■ DHG-06ABK



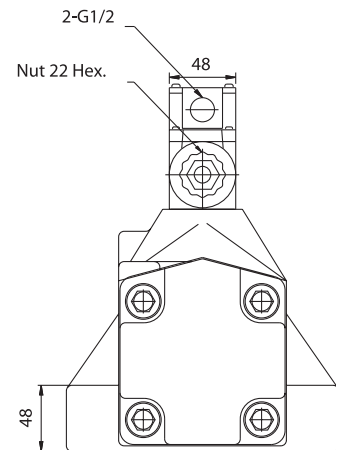
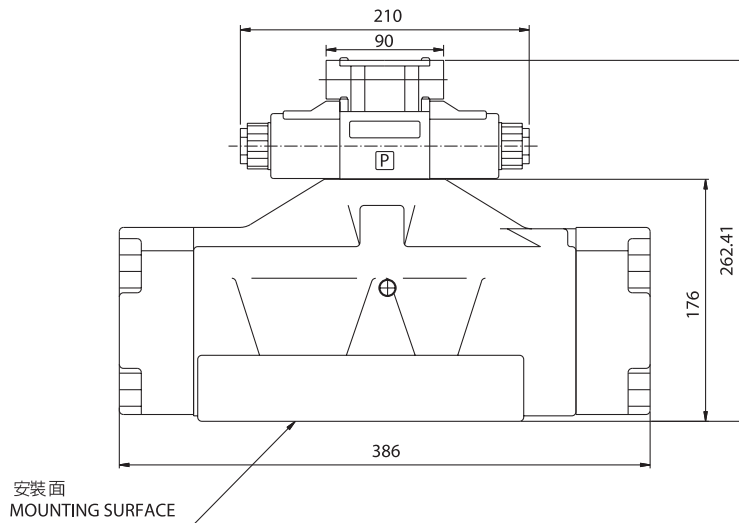
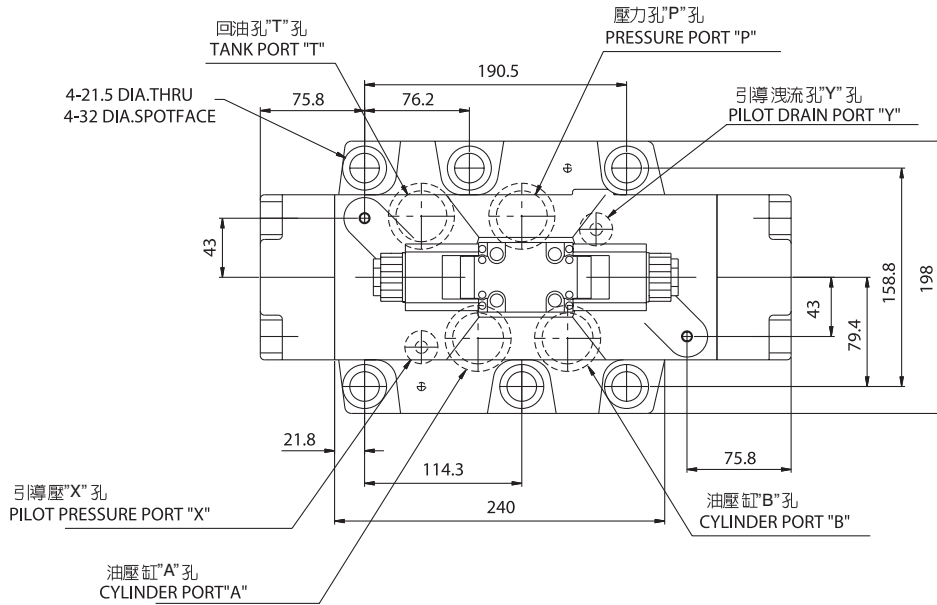


# 電液換向閥

# Solenoid Controlled Pilot Operated Directional Valves

單位 UNIT : mm

## DHG-10





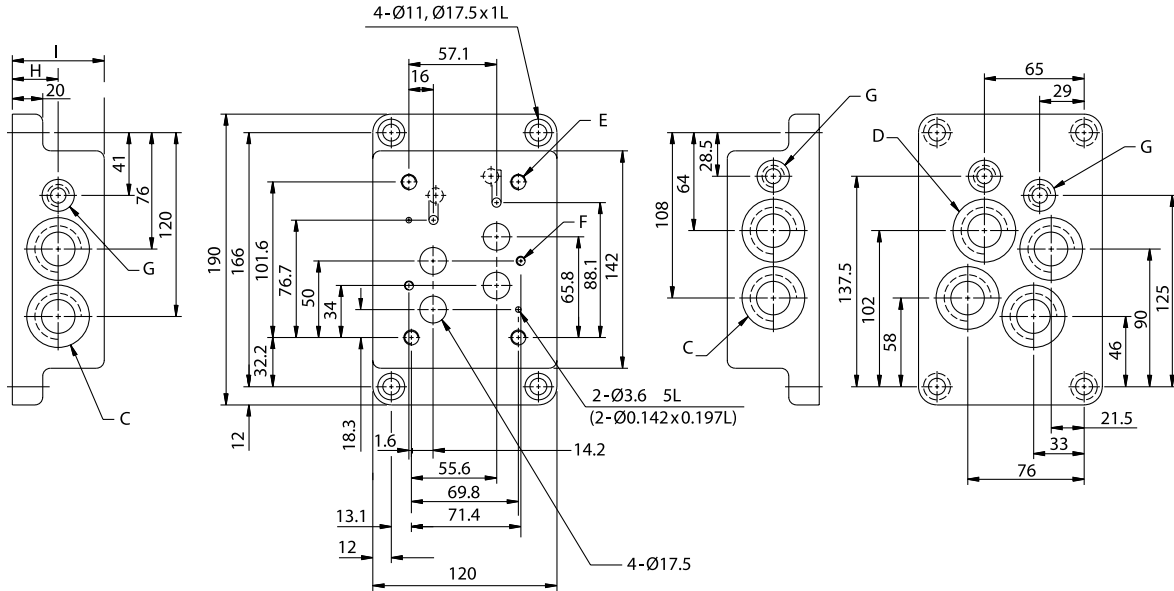
# 電液換向閥

# Solenoid Controlled Pilot Operated Directional Valves

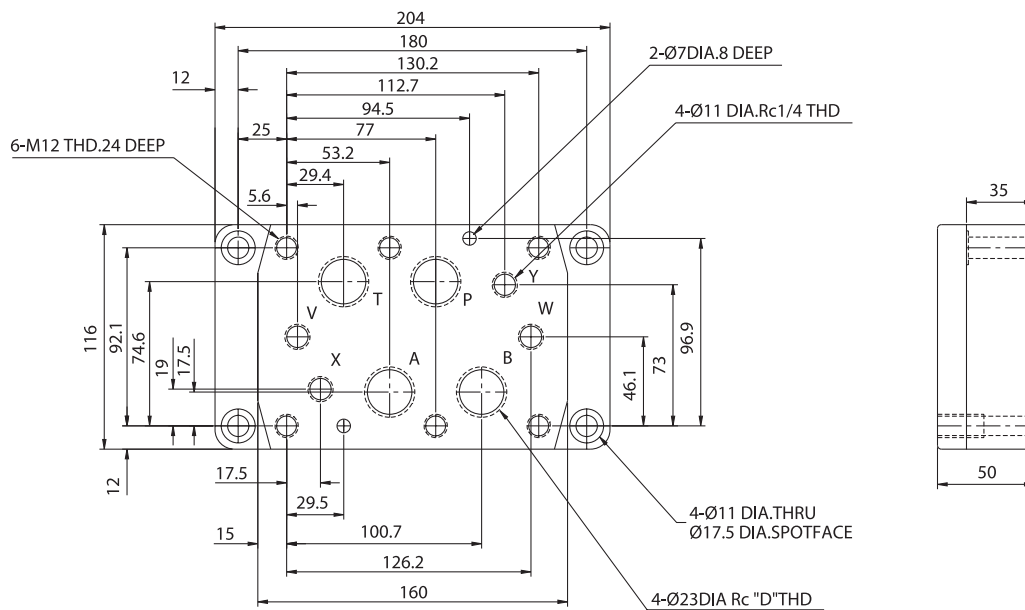
## 安裝尺寸 / INSTALLATION DIMENSIONS :

單位 UNIT : mm

### ■ DHGM-04 底板 DHGM-04



### ■ DHGM-06 底板 DHGM-06



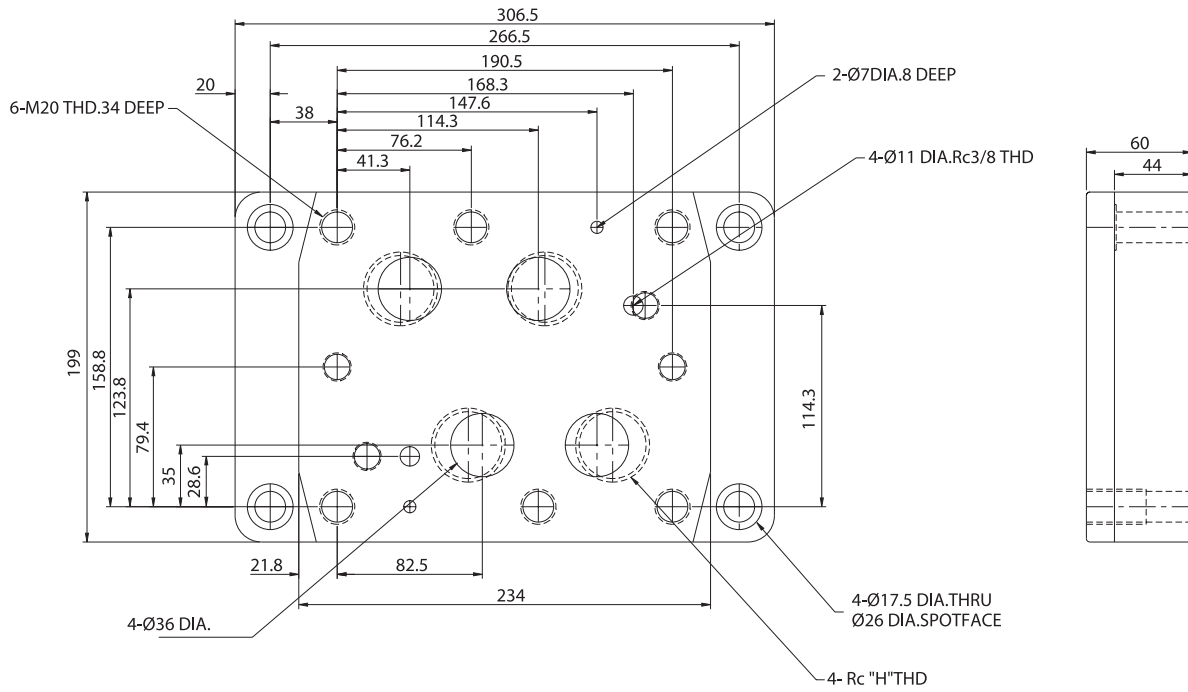


# 電液換向閥

# Solenoid Controlled Pilot Operated Directional Valves

單位 UNIT : mm

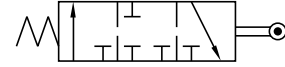
## ■ DHGM-10 底板 DHGM-10





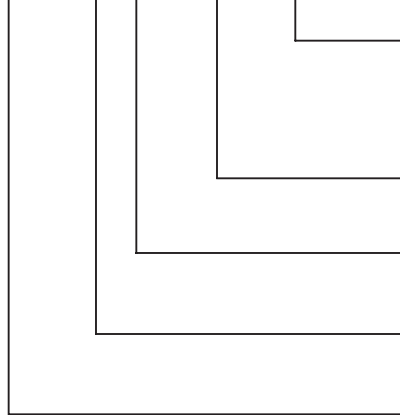
# 凸輪式換向閥

# Cam Operated Directional Valves



## 型號說明/HOW TO ORDER :

**DC — G 02 — B2 — R**



壓輪方向 ROLLER POSITION  
標準型 S —  
R —  
Y —

滑軸型式 SPOOL TYPE (SEE PAGE2)

通徑 PORT SIZE  
**02** : 1/4"

安裝型式 MOUNTING  
板式安裝 **G** : SUBPLATE MOUNTED

系列編號 : Series Number

## 規格說明/SPECIFICATIONS :

型式 MODEL	最大壓力 MAX. PRESSURE kgf/cm <sup>2</sup>	最大容許背壓 MAX. BACK PRESSURE kgf/cm <sup>2</sup>	最大流量 MAX FLOW LPM	重量 WEIGHT kg
DC-G02-B2-10	210	70	30	1.3

## 凸輪位置與流量方向說明/ DIRECTION OF OIL FLOW FOR ROLLER POSITION :

型式 MODEL	符號 SYMBOL	滾輪位置和流量 ROLLER POSITION VS. FLOW (mm)
DC-G02-2B-10		

## 附件/ATTACHMENT :

型式 MODEL	安裝螺絲 SOC HOL CAP SCREW	鎖緊扭力 TIGHTENING TORQUE
DC-G02	M5 × 45L.....4pcs	50-70 kgf/cm <sup>2</sup>



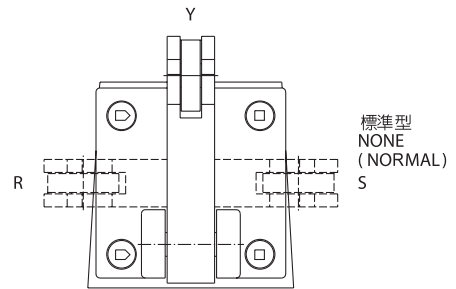
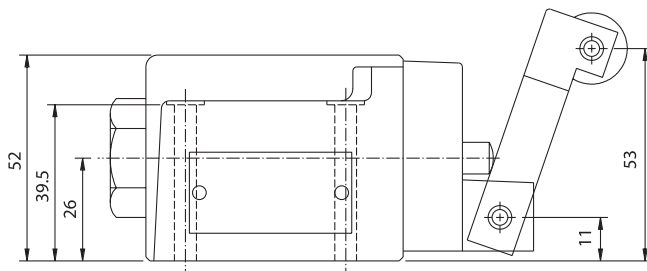
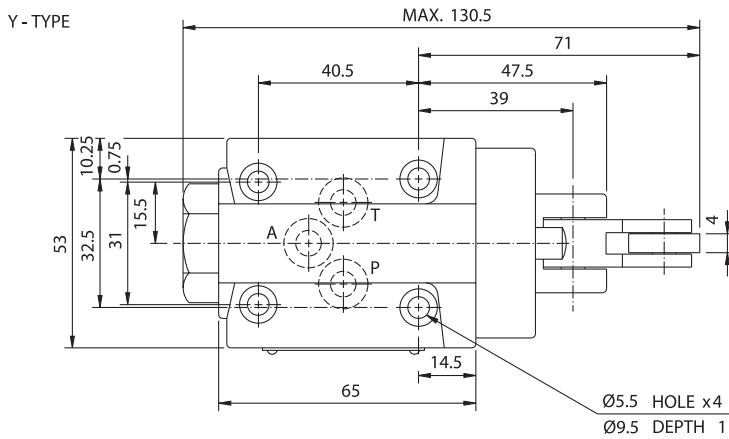
# 凸輪式換向閥

# Cam Operated Directional Valves

## 安裝尺寸 / INSTALLATION DIMENSIONS :

單位 UNIT : mm

### DC-G02-2B-10

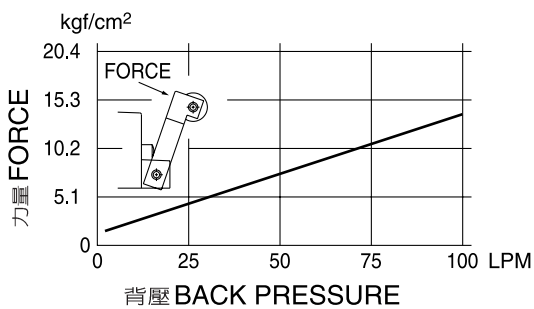


## 測試條件 / PERFORMANCE CURVES :

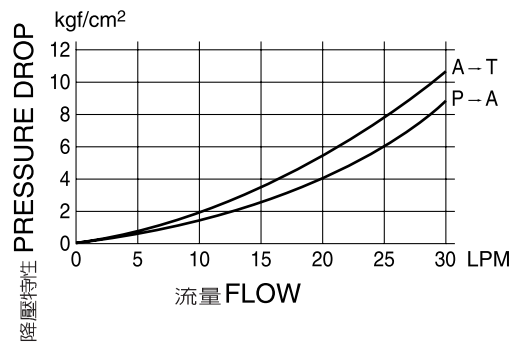
測試油粘度 : TEST FLUID VISCOSITY : 35 cSt

測試油溫度 : TEST TEMPERATURE : 50°C

### DC-G02-2B-10



### DC-G02-2B-10





# 手動換向閥

# Manually Operated Directional Valves



## 型號說明 / HOW TO ORDER :

**DM - T - 03 - C2**

滑軸型式 SPOOL TYPE (SEE PAGE 2)

通徑 PORT SIZE

**02** : 1/4"

**03** : 3/8"

**04** : 1/2"

**06** : 3/4"

**10** : 1-1/4"

安裝方式 MOUNTING

板式安裝 **G** : SUB-PLATE MOUNTING

管式安裝 **T** : THREADED CONNECTIONS

系列編號 : Series Number

## 規格說明 / SPECIFICATIONS :

型式 MODEL	最大壓力 MAX. PRESSURE kgf/cm <sup>2</sup>		容許背壓 BACK PRESSURE kgf/cm <sup>2</sup>		最大流量 MAX FLOW LPM		最大流量(C60滑軸) MAX FLOW (C60 spool)l/min		重量 WEIGHT kg	
DMG-02-*	315		140		60		40		1.6	
DMG-03-*	315	250	140	100	100	80	50	50	4.0	4.8
DMT-03-*	250		100		140		80		7.3	
DMT-04-*	315		140		350		250		15.0	12.4
DMG-06-*	315	250	140	100	350	250	250	150	15.0	12.4
DMT-06-*	210		100		500		280		22.0	
DMT-10-*										



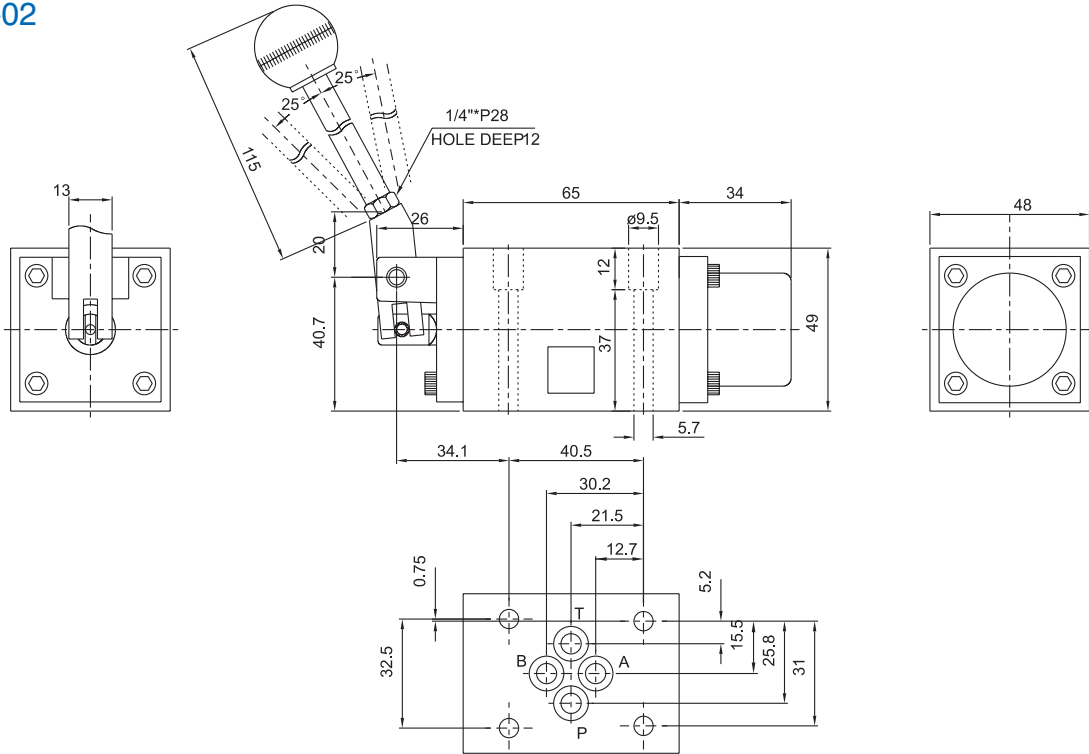
# 手動換向閥

# Manually Operated Directional Valves

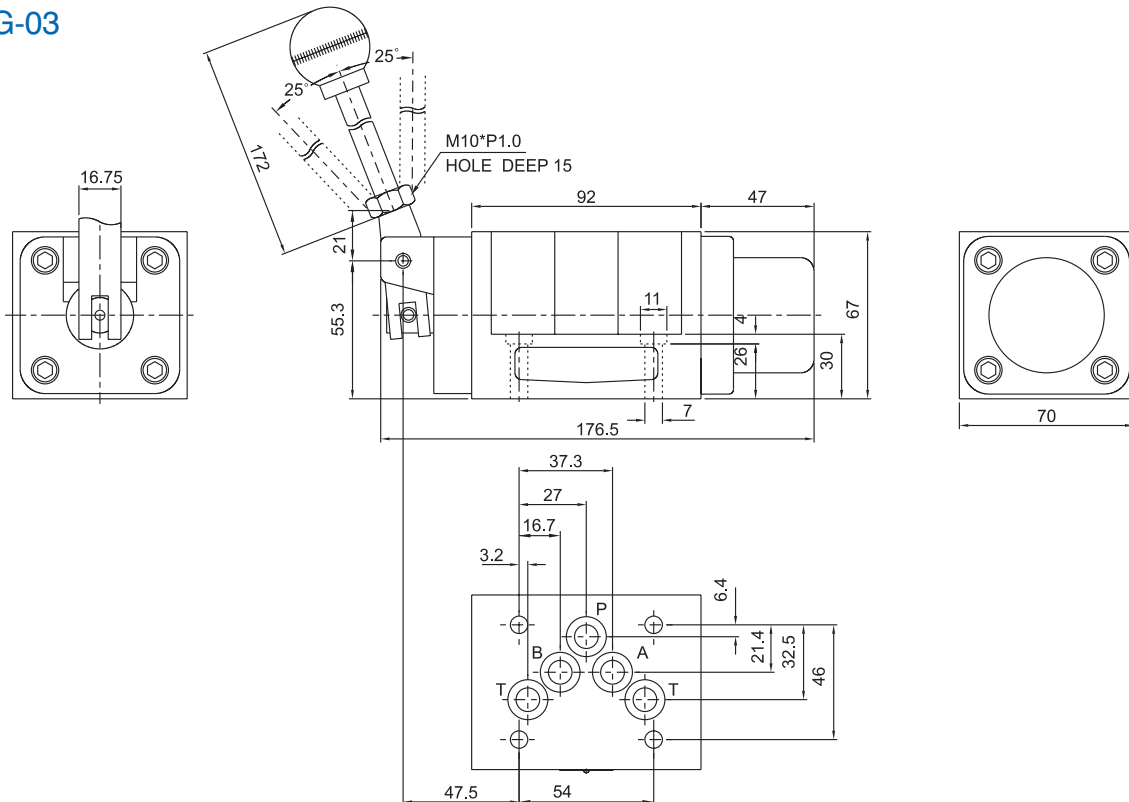
## 安裝尺寸 / INSTALLATION DIMENSIONS :

單位 UNIT : mm

### DMG-02



### DMG-03







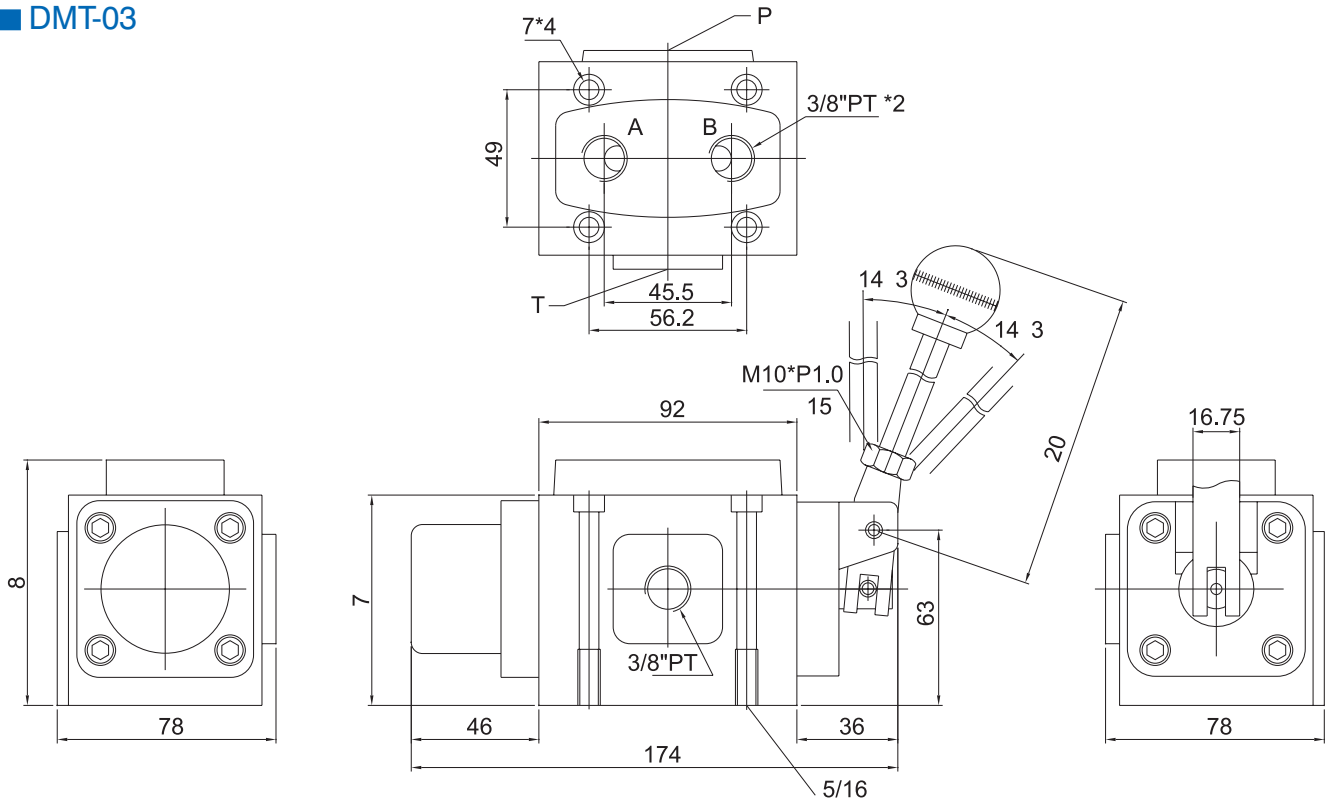
# 手動換向閥

# Manually Operated Directional Valves

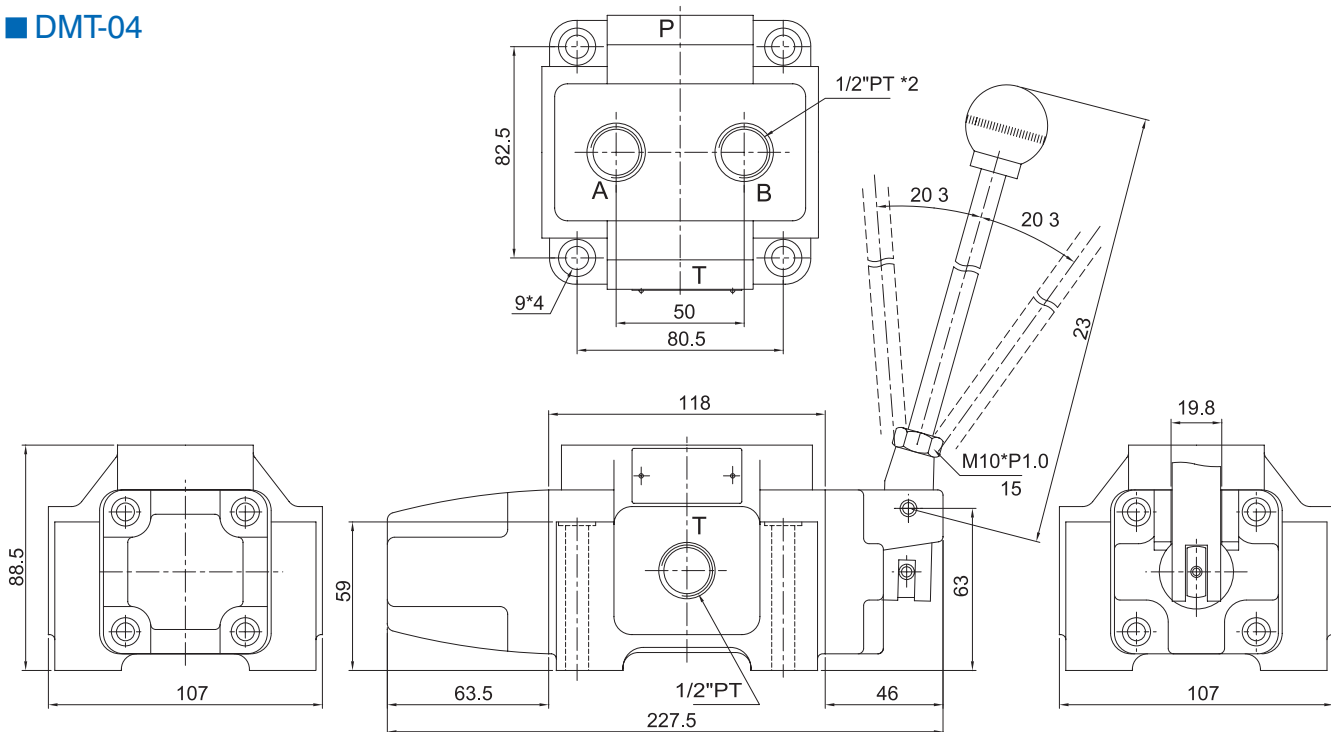
## 安裝尺寸 / INSTALLATION DIMENSIONS :

單位 UNIT : mm

### DMT-03



### DMT-04





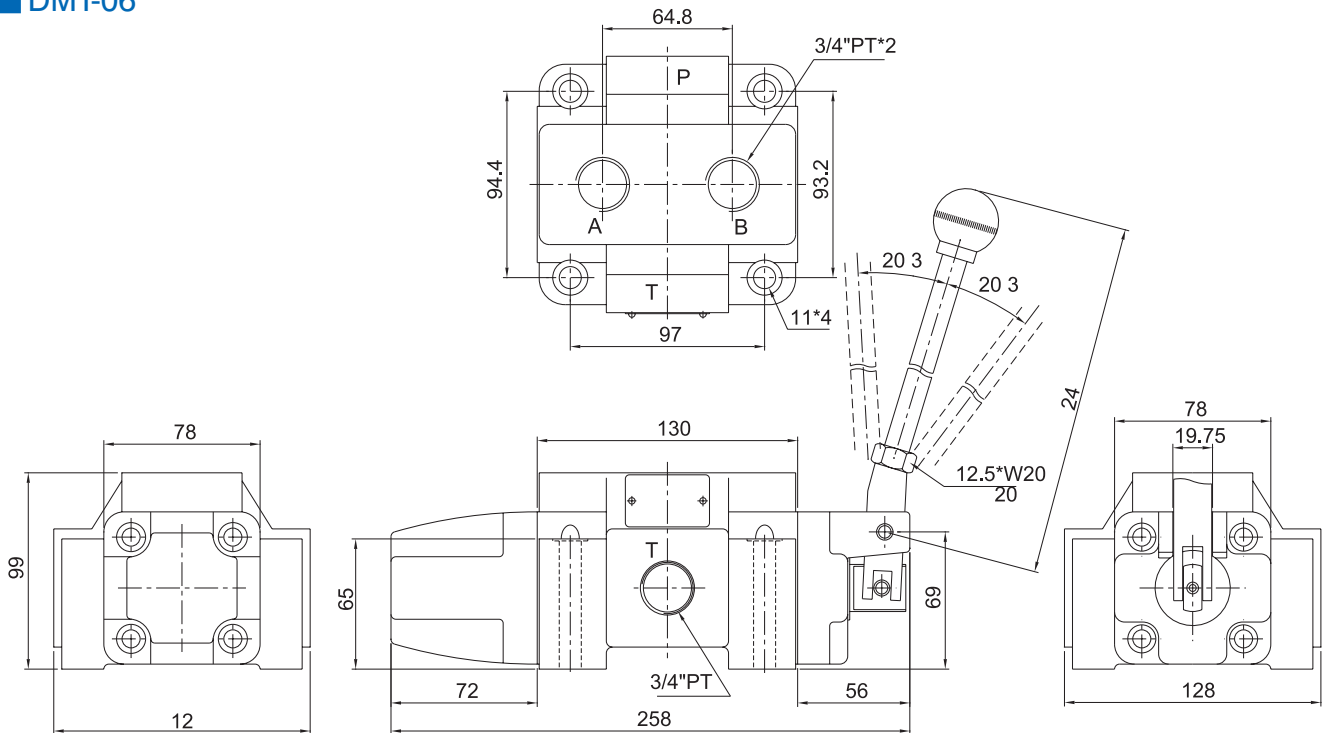
# 手動換向閥

# Manually Operated Directional Valves

## 安裝尺寸 / INSTALLATION DIMENSIONS :

單位 UNIT : mm

### DMT-06



### DMT-10

